

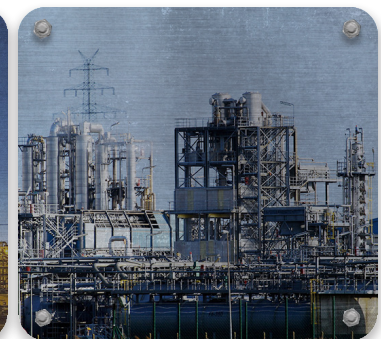
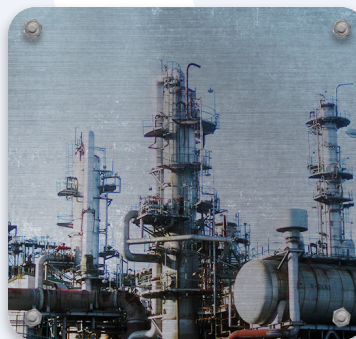


35 | Microns

10 | Lpmm

79 | Pounds

The **SignalX Onyx** is a rugged multi-application imager built with our high-grade CR technology, this positions it as the perfect solution for non-destructive testing in the industrial field. The fully sealed, hydraulic assisted, easy-lift lid makes loading IP plates a breeze, while protecting from debris entry during scanning, this positions the **SignalX Onyx** a strong choice when inspecting important and vital surfaces in power, oil, and gas plants. Using the True Flat Scan Path process, the **SignalX Onyx** will get the job done with considerable ease and efficiency while prolonging the life of your imaging plates. Do more with **SignalX Onyx**.



SIGNALX

ONYX

The **SignalX Onyx** is a versatile, high resolution imager with easy lift-open lid, designed to aid in inspecting surfaces in power plants, refineries, and other oil and gas sites. This **SignalX Onyx** utilizes a tight dust-free seal during image scanning to lower the potential for image artifacts caused by debris. The **SignalX Onyx** can be easily installed in a mobile lab, allowing for true portable imaging freedom.

SPECIFICATIONS*

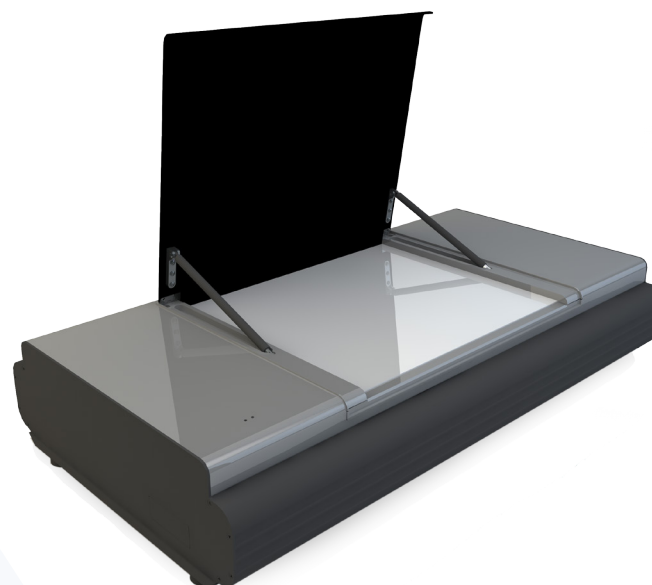
Grayscale resolution	16 bits/pixel source file, 65536 shades of gray
Pixel Pitch	35, 50, 100, 150, 200
Scanning Process	True Flat Scan Path, Dual Rail Drive System
Weight	79 lbs (35.9kg)
Dimensions	W19.5" x D6.32" x H35.75"
Throughput	60 Images Per Hour - Mixed Sizes
Feed Mechanism	Fully Sealed, Fan-less, Protected Glass Scan Bed
Material Size	17" x 17"
Power source	100-240V AC/ 2.5A max; 47-63Hz (Universal) 24V option available
Interface	USB 2.0
Heat generation	Standby 230W, maximum 1610W
Operating conditions	Temperature: 0-40°C/32-105°F, temperature change: 0.5°C/min, humidity: 15%-95% RH, magnetic fields: max 1260 µT (in conformance with EN 61000-4-8: level 3), 10 A/m
Light / Sensor	Diode / PMT
Erase Method	Automatic, LED
Network	DICONDE Compliant
Operating System	Windows 7, 8, 10 - 64-Bit

* Specifications are subject to change without notice. Processing and display time dependent on processor speed, RAM disk access time, and video card.



Components are made from 98% recyclable parts • Signal is an ISO 13485 certified company • U.S. and international patents granted • Additional patents pending

© 2017 Signal, inc. All rights reserved. "SignalX Onyx" is a registered trademark of Signal, inc. BR022317AUS



DIMENSIONS

